

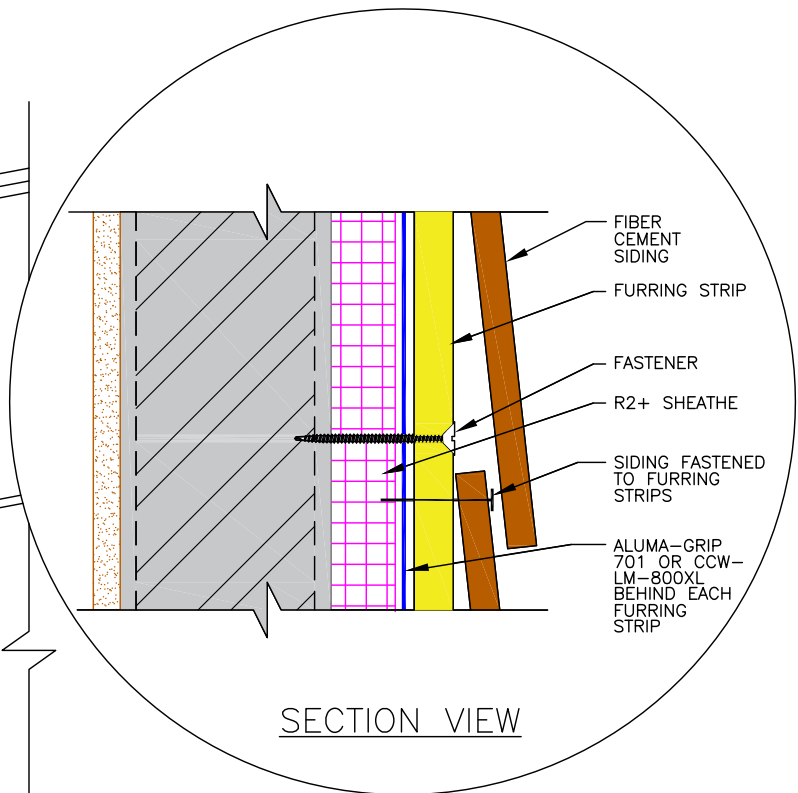
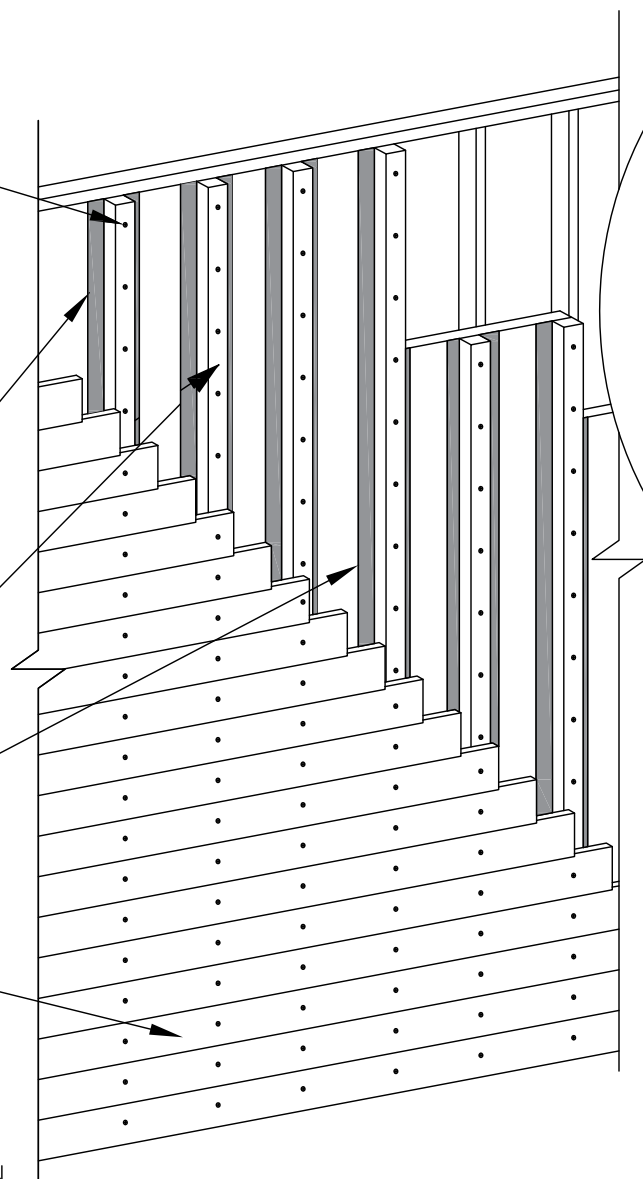
FASTEN ACCORDING TO  
CLADDING & FASTENER  
MANUFACTURER  
REQUIREMENTS

MINIMUM 3" ALUMA-GRIP  
701 OVER R2+ SHEATHE  
OR FURRING STRIP CAN BE  
BEDDED IN CONTINUOUS  
BEAD OF CCW-LM-800XL

FURRING STRIPS  
FASTENED INTO STUD

R2+ SHEATHE

FIBER CEMENT  
SIDING



DETAIL IS INTENDED TO BE A GUIDE FOR INSULATION  
INSTALLATION ONLY. WALL ASSEMBLY SHOWN MEETS  
NFPA 285. REFER TO SH-0D.1 AND SH-0D.2 FOR  
LIST OF ACCEPTABLE COMPONENTS FOR THIS NFPA  
285 WALL ASSEMBLY

SH-6D

SIDING ATTACHMENT

**CARLISLE**  
COATINGS & WATERPROOFING

© 2015 CARLISLE CORPORATION