

NOTES:

1. CAV-GRIP MAY BE USED AS A PLACEMENT AID TO FACILITATE INSTALLATION.

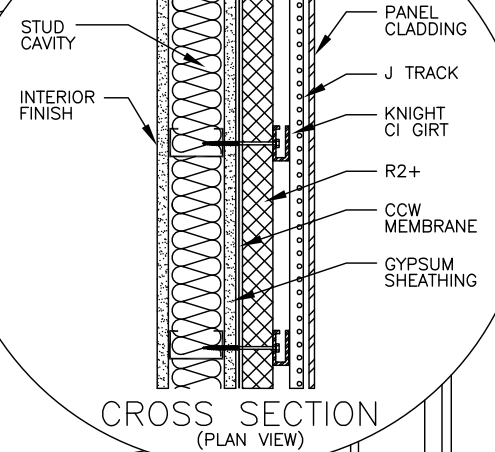
CCW MEMBRANE
AIR BARRIER

4'x8' R2+ SILVER,
MATTE, OR SHEATHE
(25 psi REQUIRED)

KNIGHT CI CLADDING
ATTACHMENT SYSTEM

ACCEPTABLE
SHEATHING

18 GAUGE STEEL STUDS
OR FIRE-TREATED WOOD
REQUIRED.



DETAIL IS INTENDED TO BE A GUIDE FOR THE
INSTALLATION OF CCW PRODUCTS ONLY. DETAIL
SHOWN IS SUITABLE FOR USE IN NFPA 285 WALL
ASSEMBLIES. USE WALL ASSEMBLY COMPONENTS AS
LISTED IN R2-0B, R2-0C AND R2-0D DETAILS.

R2-6C

4'X8' POLYISO INSULATION
UNDER KNIGHT CI SYSTEM

CARLISLE
COATINGS & WATERPROOFING

© 2015 CARLISLE CORPORATION